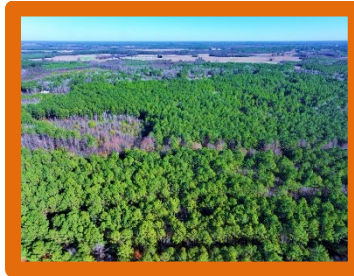




Stuarts Mill Lot 25



Location: Stuarts Mill Road and Highway 130, Fairmont, Robeson County NC 28340

Latitude: 34.4815 **Longitude:** -79.2414

Directions: From the intersection of I-95 and Highway 130 near Rowland, take Highway 130 for 3.55 miles. The land is on the right.

Distances: Dillon – 9 Miles Fairmont – 8 Miles Lumberton – 22 Miles Rowland – 5.5 Miles

Acreage: 24.02 +/- **Cleared:** 0 +/- **Wooded:** 24 +/- **Road Front:** 110

Wildlife: Deer, Turkey, Small Game

Timber: Longleaf and Loblolly Pine, Hardwoods

Parcel Number: Portion of 060101006

Zoning: RA - Residential Agricultural

Possible Uses: Home Sites, Timber Investment, Recreational, Hunting,

Description: Located on Highway 130 between Fairmont and Rowland in Robeson County North Carolina, this farm is situated in a quiet rural area close to the South Carolina state line. Electric, fiber optic, and telephone service are located adjacent to the property, and county water is available. Deer, turkeys, ducks, and small game can be hunted on the property. The excellent stand of loblolly and longleaf pine on the farm offers immediate and future timber value. The Lumber River is nearby for duck hunting, kayaking, canoeing, and excellent freshwater fishing for largemouth bass and panfish. The Lumber River is a nationally designated Wild and Scenic River. The primary soil types are Lynchburg, Wagram, Wakulla, and Bibb. Lumberton is the county seat and offers shopping, dining and a hospital. No deed restrictions, and no HOA! If you are looking for residential, recreational, agricultural, or timber land in southeastern NC take a look at this one!

For more information on this or other premier properties in North Carolina or South Carolina, contact Marty Lanier, ALC, Broker at (910) 617-4326, marty@rockcreeklandcompany.com, or visit our web site www.rockcreeklandcompany.com.

Offering Price: \$ 90,000