

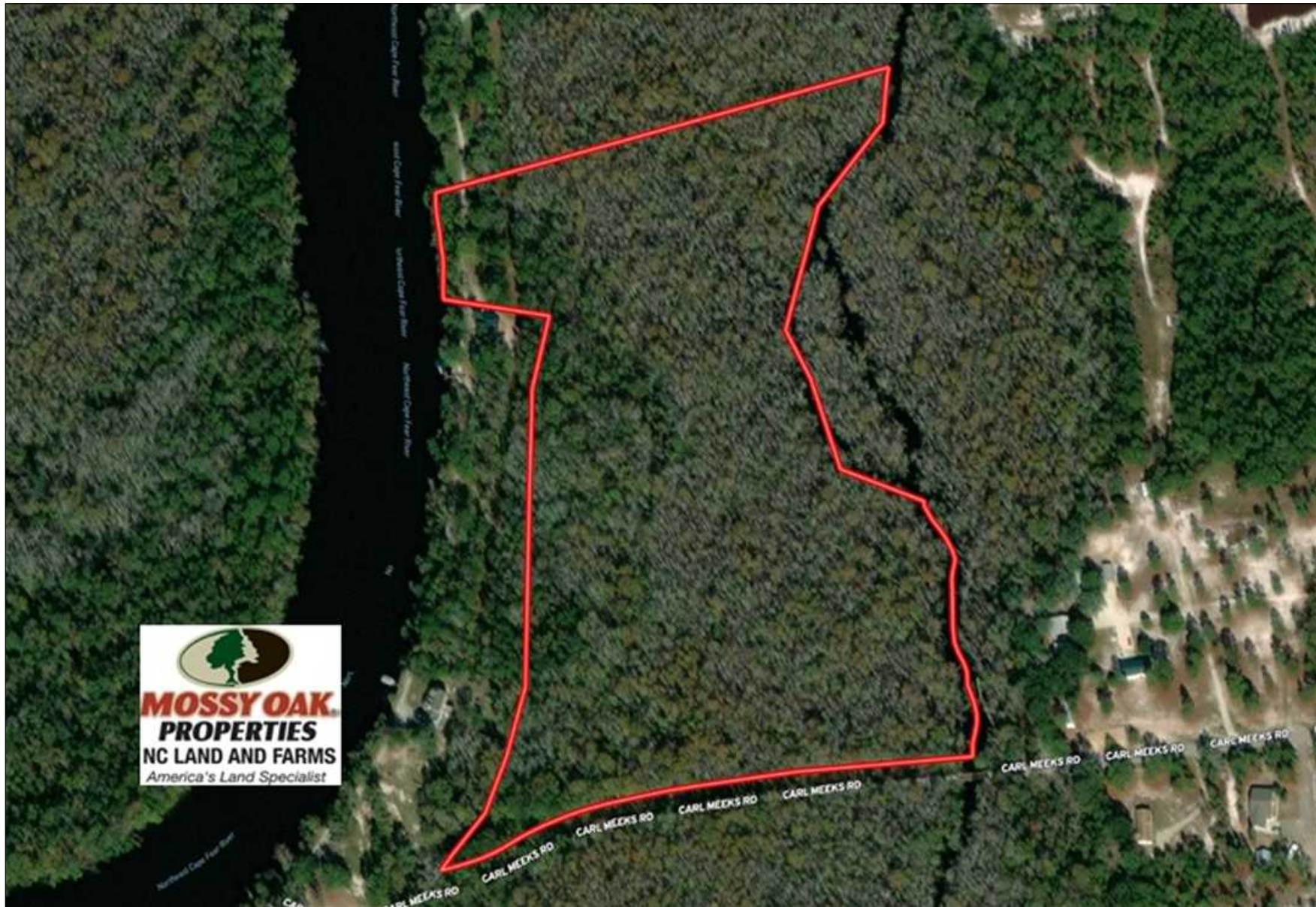


ROCK CREEK LAND COMPANY

(910) 617-4326
rockcreeklandcompany.com

SOLD!! 21 Acres of Residential and Hunting Land in Pender County NC!

Address: Off North Holly Shelter Estate Road, Rocky Point, NC 28445



Marty Lanier

(910) 617-4326 (cell)

marty@rockcreeklandcompany.com

Acreage: 21.49

Price: \$59,900

County: Pender

GPS Location: 34.5138 X -77.8301

Deer Hunting

Freshwater Fishing

Hunting

Residential

River

Small Game

Turkey

Waterfowl

Listing Courtesy of Mossy Oak Properties/Land and Farms Realty.

With a wooded lot on the Northeast Cape Fear River, frontage on Sand Hill Creek, and great hunting and fishing, this property is a sportsmans paradise!

Located on North Holly Shelter Estate Road in Holly Shelter Estates near Rocky Point in Pender County North Carolina, this is a rare opportunity to own a river front lot with over 20 acres of land to hunt! This is a perfect site to build your riverfront home and dock on the beautiful Northeast Cape Fear River. With frontage on the river and Sand Hill Creek, the recreational opportunities are endless. From trophy largemouth bass, catfish, and pan fish, to ducks, deer, and turkey, there are hunting and fishing opportunities year round. Canoeing, kayaking, boating, and riding jet skis are also popular activities on the river. Riverfront properties like this one do not go on the market often, so give me a call and we can set up a showing soon.

For a birds eye view of this property, visit our MapRight mapping system. Copy and paste this link into your browser: (<https://mapright.com/ranching/maps/f0ed471d09292c0f81e02d004915f0b4/share>), and then click on any of the icons to see beautiful photographs of the property taken from those locations. You can easily change the base maps to view aerial, topographic, infrared or street maps of the property. Take a look at the drone video of the property for a great aerial view!

To visit this property, download the free MapRight app, email the link above to your phone, open in iOS, open MapRight, click on car, click on To, Drop Pin, tap on Go and you will receive driving directions to property. Once you get to the property the link above will have the property lines and a blue dot showing your location.

For more information on this and other Residential and Hunting Land in Pender County NC, contact Marty Lanier at (910) 617-4326, by email at m Lanier@mossyoakproperties.com, or visit my web site at www.moprockcreekland.com.



SOLD!! 21 Acres of Residential and Hunting Land in Pender County NC!

**ROCK CREEK
LAND COMPANY**

(910) 617-4326
rockcreeklandcompany.com

